

\$40,000 - 14 Wimbledon Court 807-2, Hilton Head Island

MLS #447664

\$40,000

2 Bedroom, 2.00 Bathroom,
Residential on 0 Acres

PR Outside Gate, Hilton Head Island, SC

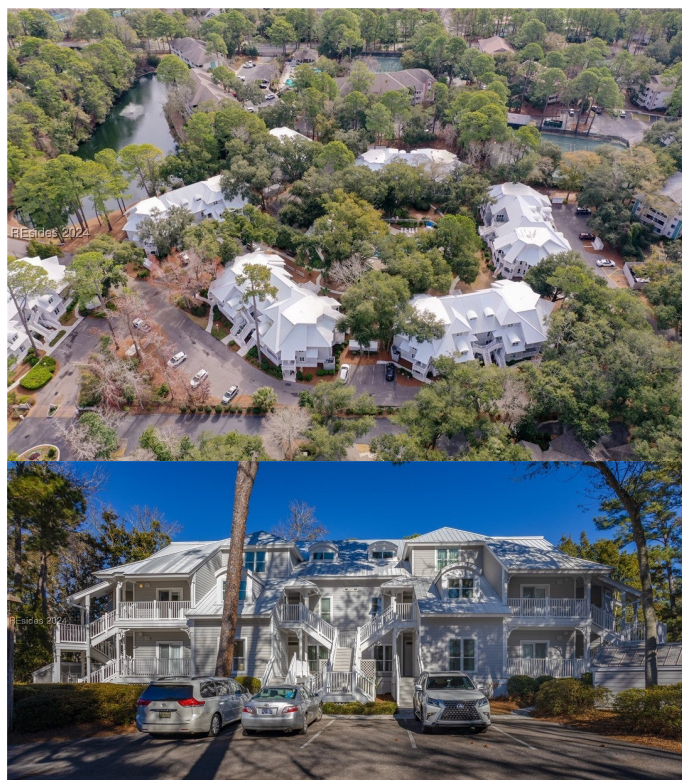
Why own more than you can use? Walking distance to the beach! Ocean Palms is a 1/5th deeded fractional ownership property allowing each owner 10 weeks of use per year on a calendar rotation of 2 weeks back to back 5 times annually. Management by the Westin Oceanfront Resort allows use of the hotel amenities, fitness center, oceanfront pool complex, beach access and resort shuttle. A great golf & tennis package is included with ownership. This wonderful 2 bedroom/2 bath designer furnished 1st floor Sanibel floor plan has 1350 htd sq ft, a screened porch & covered deck, and a wonderful lagoon view. Onsite model villa open daily.

Built in 1994

Essential Information

MLS #	447664
Price	\$40,000
Bedrooms	2
Bathrooms	2.00
Full Baths	2
Acres	0.00
Year Built	1994
Type	Residential
Sub-Type	Co-Ownership
Status	Active

Community Information



Address	14 Wimbledon Court 807-2
Area	Port Royal
Subdivision	PR Outside Gate
City	Hilton Head Island
County	Beaufort
State	SC
Zip Code	29928

Amenities

Amenities	Beach Rights, Beach Access, Fitness Center, Golf Course, Barbecue, Picnic Area, Pickleball, Pool, Spa/Hot Tub, Tennis Court(s), Trash, Transportation Service, Cable TV
Parking	Unassigned
View	Lagoon
Has Pool	Yes
Pool	Community

Interior

Interior Features	Wet Bar, Ceiling Fan(s), See Remarks, Window Treatments
Appliances	Built-in Coffee Maker, Dryer, Dishwasher, Disposal, Microwave, Refrigerator, Self Cleaning Oven, Stove, Washer

Exterior

Windows	Window Treatments
---------	-------------------

Additional Information

Days on Market	250
----------------	-----

Listing Details

Listing Agent	Bruce Tuttle
Listing Office	Hilton Head Properties



Property Listed by: Hilton Head Properties

We do not attempt to independently verify the currency, completeness, accuracy or authenticity of the data contained herein. All area measurements and calculations are approximate and should be independently verified. Data may be subject to transcription and transmission errors. Accordingly, the data is provided on an "as is" basis only and may not reflect all real estate activity in the market. © 2025 REsides, Inc. All rights reserved. Certain information contained herein is derived

from information, which is the licensed property of, and
copyrighted by, REsides, Inc